



PORTA TEATRO  
Mexico  
Factory Theatre - Mainspace  
125 Bathurst St, ON M5V 2R2  
60m | Spanish w/ English Surtitles

[www.rutas.ca](http://www.rutas.ca)

For inquiries please contact  
[alunatheatre@gmail.com](mailto:alunatheatre@gmail.com)

## WILMA

*What happens when a message that could save your life is in a language you were forbidden to learn?*

*Wilma* narrates the story of a girl who grows up as a foreigner on her own land. She is isolated by the racism and classism imposed by her Irish grandmother, who forbids her to learn Maya and associate with Maya speakers. Suddenly, one of the worst hurricanes in history arrives on the peninsula. An early cyclone alert is issued in the Maya languages. Unable to communicate with others, she tries to survive a hurricane without anyone's help. Will she make it?

Winner of the best solo shows from the Association of Critics and Journalists in Mexico (ACTP).

### Performances:

SEPTEMBER 27, 2024 AT 7:00 PM

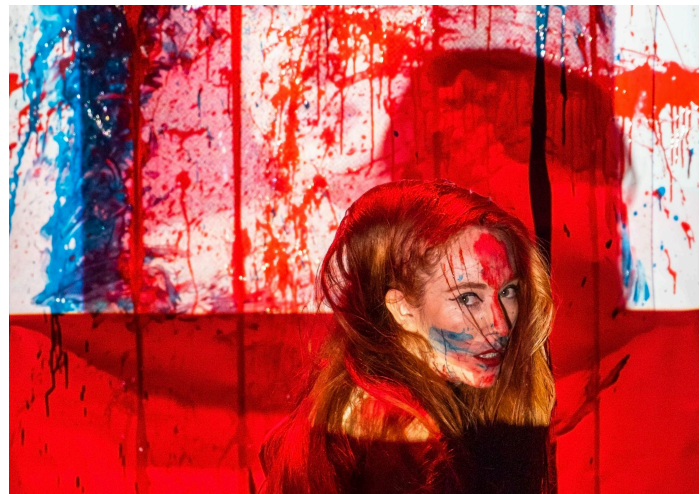
SEPTEMBER 28, 2024 AT 7:00 PM

SEPTEMBER 29, 2024 AT 2:30 PM

### Tickets:

Pay What You Can Afford

\$25, \$35, \$60



*"To poke. Disinfect. Scream. The Theatre of Itzhel Razo makes you feel uncomfortable. It can make you laugh, but it will do so to point out the issue at hand. It is capable of leading you through hilarious moments while also making your stomach churn. It is a theatre that shakes us to the core. It is a necessary theatre." - Luis Herrera Albertos, El Financiero*



Partly autobiographical, partly fictional, the piece uses the analogy of the two Wilmas: A grandmother that imposed a classist and ethnophobic education on a young girl and Hurricane Wilma (2005). Both of these social and natural catastrophes leave long lasting effects on the individual and society.

The piece explores these devastating consequences through its unique storyline, supported by rich interdisciplinary languages. All elements of the production including costumes, movement, set design, sound, language, and Maya elements are interconnected to create a scenic ritual. It's a purge to heal the wounds resulting from an ethnophobic education that deprived this girl from a wonderful world of possibilities.

*“Wilma is the kind of theatre that opens our senses, whose aesthetic is cemented in the visual, in the sonic, in the scenic movement. Itzhel Razo’s dramaturgy is organic, performative, expressed through a one-person show whose spoken and corporal language originates in a region that witnessed the birth and growth of the Maya Culture, a focus that she captures on stage.”* - Roberto Sosa, Cartelera de Teatro

*Wilma* is set in Merida, Yucatán, a city that has been known as the “white city” - where for a long time only whites were allowed in. And yet, the Mayas of the Peninsula of Yucatan are the second largest Mesoamerican group of peoples in Mexico. In Merida, public schools are bilingual in Maya and Spanish. However the elite, like the grandmother in *Wilma*, send their kids to private schools to avoid any contact with a culture they see as inferior and undesirable.

From the social to the personal to the universal, *Wilma* conveys this message: the seeds of racism and classism are planted in our childhood through the education we receive at home.



Since 2012, the **RUTAS International Festival of Performance** has established itself as the only event of its kind in Canada. Through our mission of **Connecting the Americas through The Arts**, the festival brings to Toronto some of the most innovative artists representing the bountiful cultural diversity of our continent. With breathtaking presentations in theatre, dance, and performance, **RUTAS** creates a **TransAmerican** experience of impeccable quality and excellence for all. Downtown Toronto becomes the meeting place for audiences from across the GTA to be inspired, moved, and entertained by a gamut of rich artistic experiences.

**RUTAS is more than a festival. It is a commitment to building thriving communities.**

This biennial festival was founded by **Aluna Theatre**. This celebrated and multi-award-winning company has brought the Latinx and other racialized communities to the forefront, changing the landscape of Canadian theatre.

**Aluna** is a not-for-profit organization created in 2001 to address the underrepresentation and misrepresentation of a number of diverse communities in the arts. For over two decades we have been creating, developing, producing and presenting artistically innovative and culturally diverse performance work, with a focus on Latin Canadian, women and other racialized artists.

We are proud to also welcome and support newcomers to our artistic family. They are vital to the growth and sustainability of our communities. Making them feel at home is our greatest joy.

To learn more please visit [www.alunatheatre.ca](http://www.alunatheatre.ca)